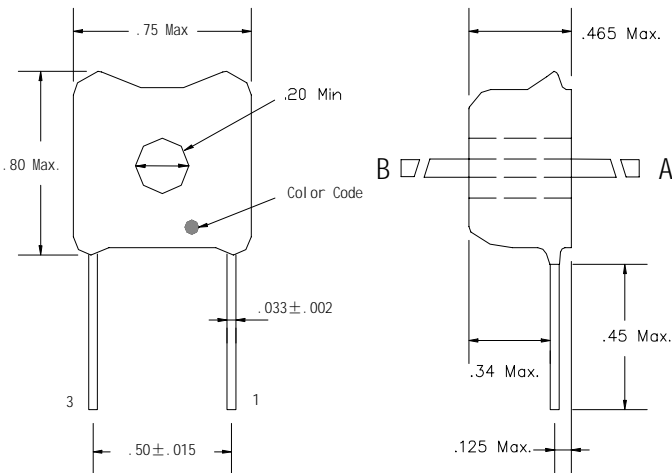
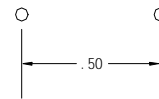
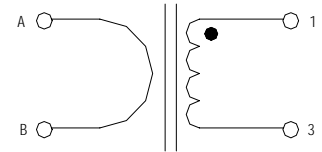


Current Sensor Transformer

MECHANICAL DIMENSIONS (inch)



SCHEMATIC



MOUNTING PATTERN

ELECTRICAL CHARACTERISTICS

| Part No | Turns | Inductance (mH) | Sensed Current Max(A) | Vout(V) | Iin(A) | Color Code | Terminating Resistor (Ohms) |
|---------|-------|-----------------|-----------------------|---------|--------|------------|-----------------------------|
| T12001C | 50 | 5 | 10 | 1 | 1 | Green | 50 |
| T12002C | 100 | 20 | 24 | 1 | 1 | Brown | 100 |
| T12003C | 200 | 100 | 35 | 1 | 1 | Red | 200 |

Inductance measured @10kHz,0.1Vrms

APPLICATIONS

Applications include feedback control, overload sensing, detecting load drop or shutdown, and proportional output.