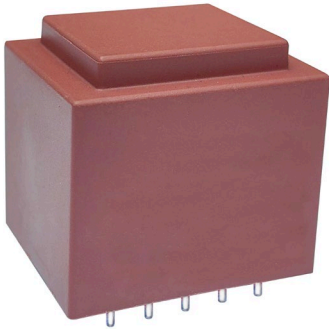
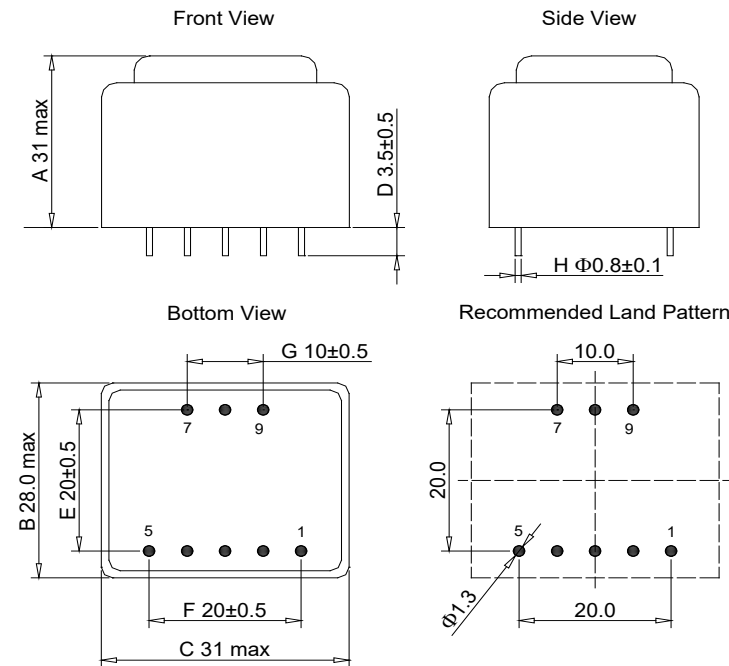


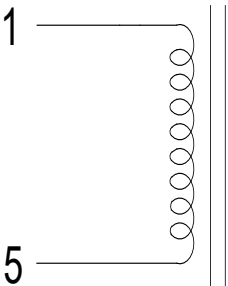
# XZM-RE28056GP

## PFC CHOKE

### Dimensions:[mm]



### Schematic



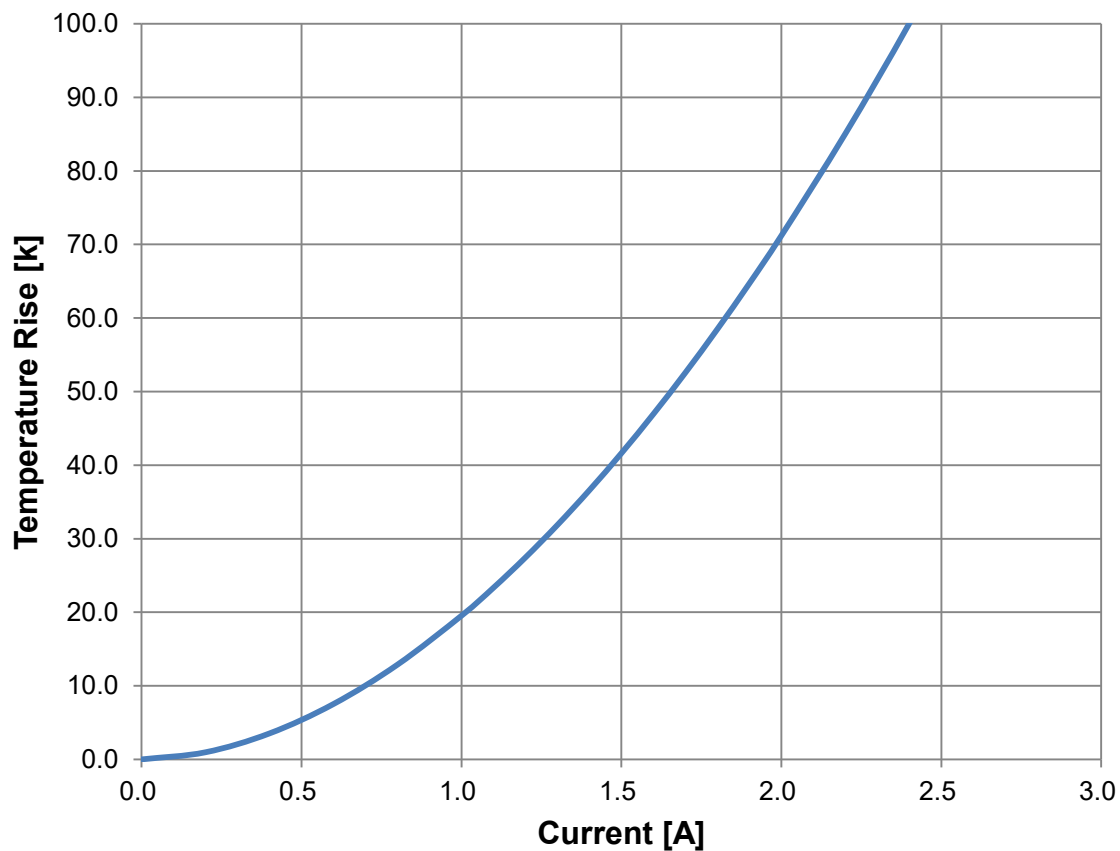
### Electrical Properties@25±2℃

| PROPERTIES            | TERMINAL  | SPECIFICATION | TEST CONDITION              |
|-----------------------|-----------|---------------|-----------------------------|
| Inductance            | 1--5      | 10.0mH±20%    | 1KHz,1.0V,SER               |
| DC Resistance         | 1--5      | 0.85Ω Max     | Ta=25℃                      |
| Insulation Resistance | Coil—Core | 100MΩ Min     | DC500V(Before Potting)      |
| Dielectric strength   | Coil—Core | 1000V         | 3mA/1S/50Hz(Before Potting) |

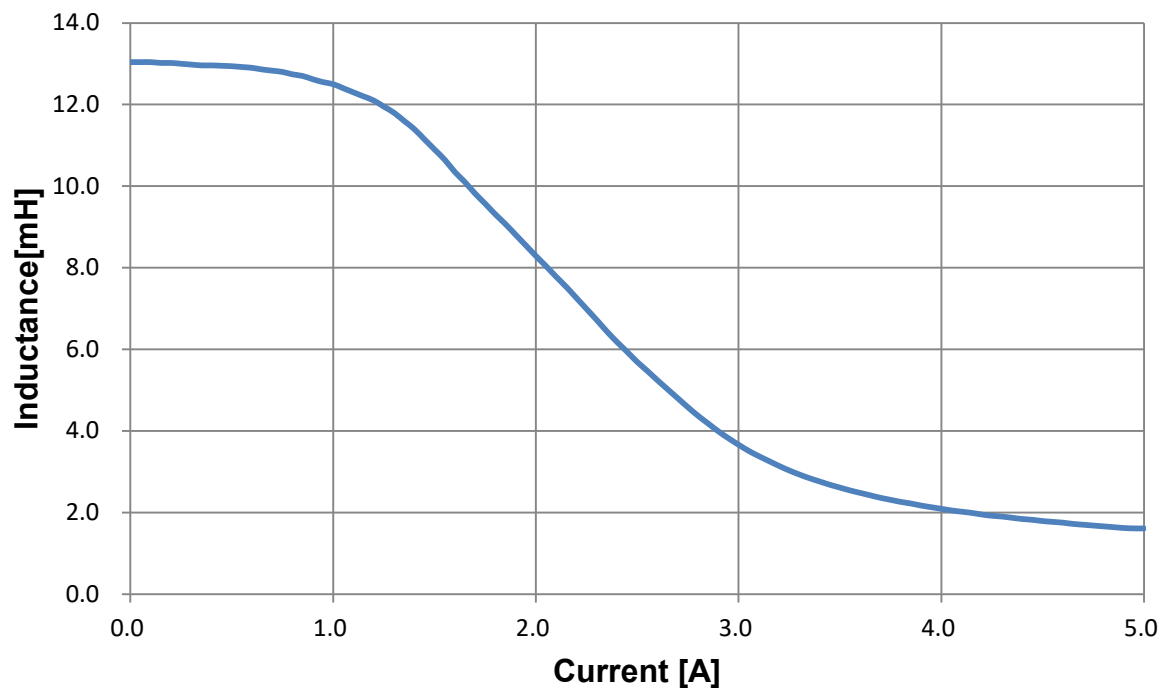
### GENERAL PROPERTIES:

- Function : Reduces the harmonics of the input current(Power Factor Correction)
- Working Frequency: 50Hz/60Hz
- Operating temperature : -40℃~115℃(It is recommended that the temperature of the component does not exceed +125 °C under worst case conditions)
- Storage temperature: <40℃;75% RH(in original packaging)
- Rated Current: 1.5A (AC current (A) that will cause an approximate ΔT of 40 °C)
- RoHS Approval: Compliant directive 2011/65/EU
- REACH Approval: Conform or declared (EC)1907/2006

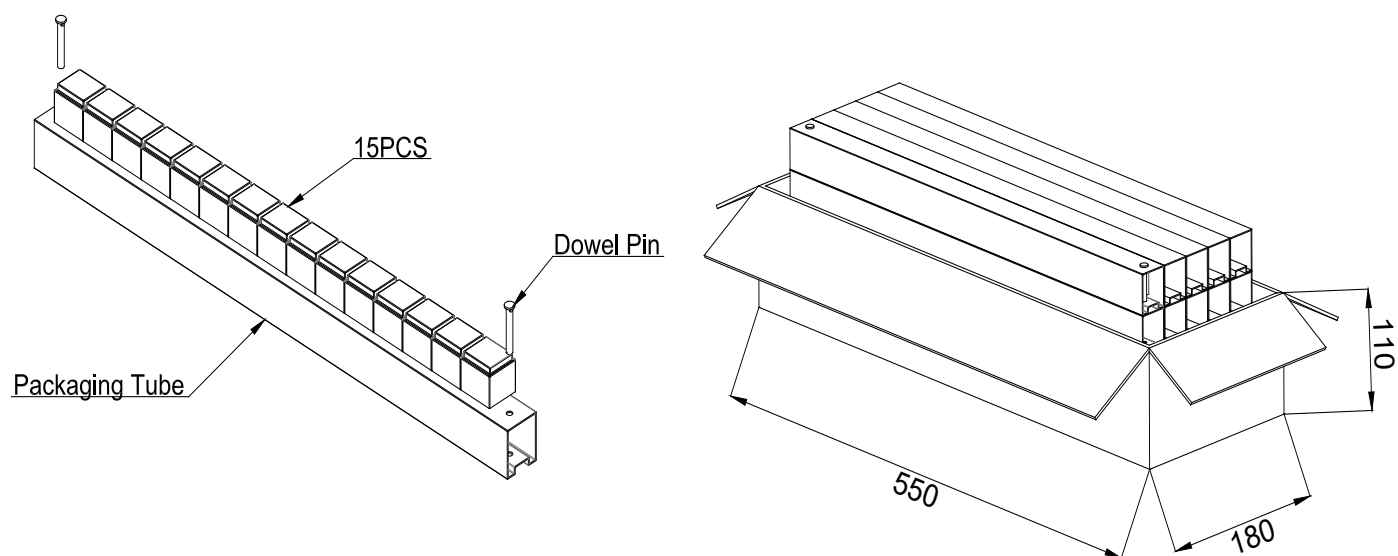
## Typical Temperature Rise vs. Current Characteristics



## Typical Inductance vs. Current Characteristics [Tested by DPG-10]



## Packaging Specification—Tube and Carton:[mm]



| No. of Tube | No. of Packaging Unit in each Tube | Packaging Unit | Material of Packaging Tube | Piece Weight (g) | Gross Weight (kg) |
|-------------|------------------------------------|----------------|----------------------------|------------------|-------------------|
| pcs.        | pcs.                               | pcs.           |                            | typ.             | typ.              |
| 10=5*2      | 15                                 | 150            | PVC                        | 97               | 16                |